

Annual Report

July 1, 2014 through June 30, 2015



Director's Message

Tuscarawas County Board of Commissioners

- Belle Everett
- Kerry Metzger
- Chris Abbuhl

Tuscarawas County Planning Committee Members

- David Haverfield
- Belle Everett
- Alison Kerns
- Amy Dotts
- Chuck Lorenz
- Connie Finton
- Debra Whitney
- Janet Gore
- Jennifer Meek Eells
- Michael Harrington
- Pat Comanitz
- Rindy Brace
- Traci Berry

State Fiscal Year 2015 can best be summed up as a year of many challenges for the staff at Tuscarawas County Job & Family Services. We were able to congratulate many long-serving employees who retired after a dedicated career helping others, and welcomed a number of new employees who brought a new dedication and passion to this challenging work.

The state began to expand access to Medicaid while at the same time implemented major changes in the way we handled these cases.

Frustration levels ran high much of the year as the systems made the work of staff members much more challenging. Only the dedication and effort of these staff members helped insure that our clients received their benefits in a timely fashion.

We also began to see a rise in the number of children coming into care as the beginning of the heroin and opiate epidemic arrived. Staff in child welfare witnessed heartbreaking stories every day, yet found a way to insure that our most vulnerable population was protected. Elder abuse referrals continued to rise as well. Despite those challenges, our staff continued to be trendsetters in finding timely permanency for our children.

As many other challenges arose, the agency continued to do its best to serve our most vulnerable populations, and the staff at this agency are most assuredly dedicated to our Mission Statement: **"TCJFS helps people achieve safety, stability, and self-sufficiency"**.

David W. Haverfield, Director

Contact Us:

Tuscarawas County Job & Family Services
389 16th Street, SW
New Philadelphia, Ohio 44663

Phone: 330-339-7791
Toll Free: 1-800-431-2347
Fax: 330-339-6388
E-Mail: HELP@TCJFS.ORG
Website: WWW.TCJFS.ORG

Public Assistance

Cash assistance (OWF) and food assistance (FA) cases declined in Tuscarawas County and throughout Ohio during fiscal year 2015. Both OWF and FA cases saw an 8-11% decline.

Tuscarawas County's unemployment rate also dropped to 5.5% in July of 2014 and continued to fall to 5.1% by June 2015.

For those families with children in need of cash assistance, TCJFS workers processed an average of **263 OWF cases** per month. Those benefits provided **\$93,573.50 in cash assistance** to an average of **450 people** per month.

OWF beneficiaries are required to work off the cash assistance so the counties can meet their required participation rates. On average, 15 OWF recipients participated monthly at a WEP site with a local employer to work off their benefits.

Some food assistance recipients are also required to work off their benefits. Out of the 5,434 food assistance cases, **1,329 clients were required to work off their food assistance.**

Tuscarawas County **provided \$1,276,505.25** monthly **in food assistance.** There were **16,616** food assistance **recipients** in Tuscarawas County in 2015.

The Direction Card can now be used at many farmer's markets throughout Ohio so clients can obtain fresh fruit and vegetables and assist Ohio growers.

The TCJFS fraud unit obtains referrals and processes about 20 complaints a month. Our **agency collected \$143,950.40** in **FY 2015 in overpayments.**

Fraud can be reported to our agency or on the ODJFS website: www.ifs.ohio.gov/fraud.

Any program, including cash assistance, food assistance, child care, unemployment insurance, and Medicaid **can be reported** to this website if there is suspected fraud occurring.

Tuscarawas County's population stayed the same at 92,788, with only 14.3% of individuals in our county living under the poverty level.



Our agency had 42,776 visitors to our agency in 2015. That is an average of 170 each day.

Our agency website had 43,176 visits, which is an average of 3,925 per month. Our website, www.tcjfs.org has wonderful information for clients and Tuscarawas County citizens.

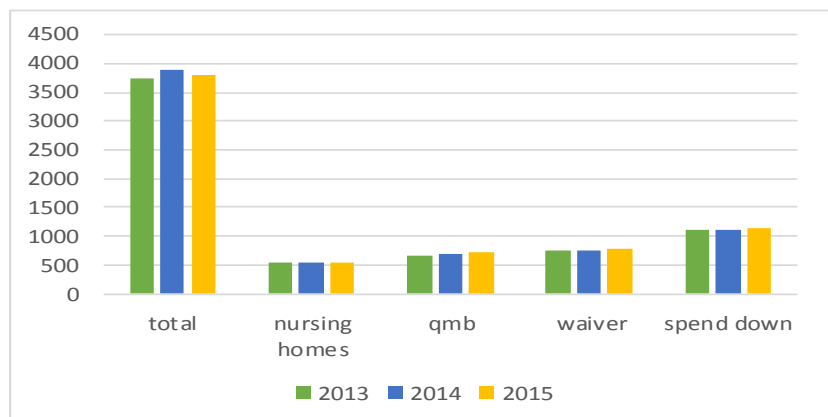
The Prevention, Retention, and Contingency Program supplied \$400,250.00 to assist 1,773 children in Tuscarawas County to purchase back-to-school clothing and supplies in 2015 with a one-time fund received from the State.

Medicaid

Tuscarawas County processed an average of 3,800 medical cases per month.

About 21% of Tuscarawas County residents were enrolled in Medicaid.

It is estimated that 12% of our county is still uninsured.

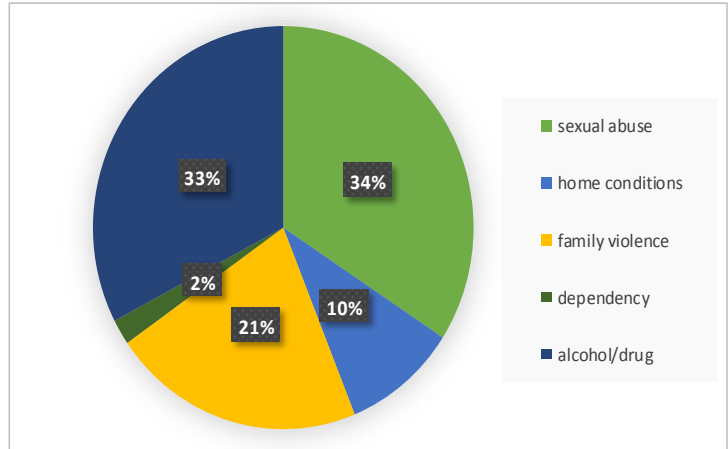


Child Protective Services

Our protective unit received **1,547 reports of abuse/neglect** to children. The workers were involved with 787 families due to these reports. From those reports, **39 children were removed** from their families due to severe abuse/neglect.

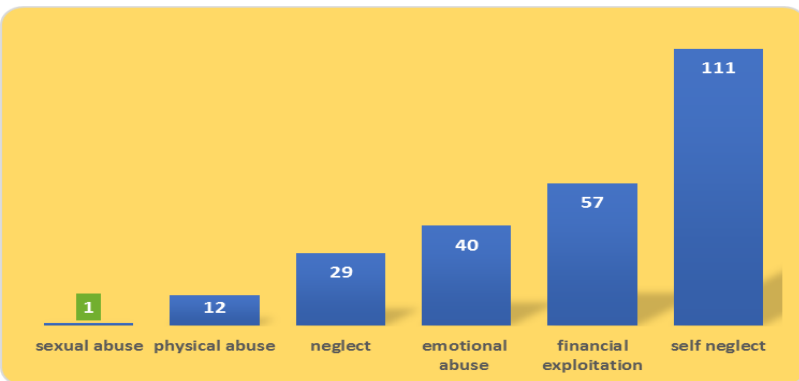
Sexual abuse, alcohol/drug use, and family violence are serious conditions these children are forced to live in until someone makes a report in order to help that child.

If you know of a child who lives with abuse/neglect, **please help by calling 330-339-7791, or** call the sheriff's office at **911** if it is an emergency situation.



There was an average of **93 children in agency custody** each month which cost the county **\$230,119.10 monthly**. Only **30%** of the children in our care were **placed in Tuscarawas County foster homes**. Children with a higher level of care must be placed in either therapeutic homes, residential centers, or group homes. These placements are costlier than regular foster homes. About 58% of children in our care are placed in these homes. Our agency **finalized 31 adoptions** in 2015. Tuscarawas County has **19 certified foster homes** available.

The agency sponsored a Post Adoption Services Expo on March 5, 2015 at the Performing Arts Center at KSU Tuscarawas campus in New Philadelphia. The Expo provided adoptive families the opportunity to learn about the local and statewide post adoption services. Post adoption providers were on hand to provide information and there were also two trainings available for foster parents to attend during this event.



Our **Adult Protective Services** worker had a total of **250 reports for 2015**. Most of those were of self-neglect. The APS worker handles abuse/neglect/exploitation of the elderly.

Due to the increased number of calls regarding the elderly, our agency hired an additional worker to assist in the adult protective services area.

If you are interested in becoming a foster parent, our agency provides classes beginning in September. Please call 330-339-7791 for more information.

Child Care Program

Our agency processes an average of **314 cases** per month to assist parents with the cost of child care. There is an average of **600 children** in child care monthly due to the availability of funds through this program.

We offer assistance to parents who are employed, going to school, have special needs children, or are involved with children services through our agency. Parents are able to choose either a licensed in-home provider or a contracted licensed day care center to care for their children.

PROGRAMS AND EXPENSES

CHILDREN SERVICES ADMINISTRATION COSTS

State Operating Costs	\$49,120.00
Federal Social Services (Title XX Base)	\$238,786.10
Title XX TANF Transfer	\$617,890.41
Title IV-E Adm. & Trng. (IV-E New Money)	\$283,545.53
State Child Protective	\$344,482.00
Chaffee (Independent Living)	\$8,093.23
Adult Protective Services	\$4,490.36
Title IV-B	\$16,710.84
Child Care Costs	\$106,032.24
TOTAL	\$1,669,150.71

CHILDREN SERVICES PROGRAM EXPENSES

Child Abuse Prevention	\$2,000.00
Emergency Service Assistance	\$23,029.77
Post Adoption Services	\$9,694.75
Kinship Permanency Incentive	\$17,850.00
Subsidized Adoptions	\$314,501.52
Foster Care	\$2,977,936.60
Alternative Response	\$1,000.00
Caseworker Visits	\$4,589.00
TOTAL	\$3,350,601.64

PUBLIC ASSISTANCE COSTS AND BENEFITS ISSUED

PUBLIC ASSISTANCE ADMINISTRATIVE COSTS		PUBLIC ASSISTANCE ISSUED BENEFITS			TEMPORARY ASSISTANCE FOR NEEDY FAMILIES		
			LOCAL	STATE	FEDERAL		
Medicaid	\$1,060,055.52	Food Assistance			100%	PRC (Prevention, Retention, and Contingency)	\$26,400.63
Food Assistance	\$557,456.45	Disability	25%	75%		TANF Transportation	\$4,387.90
FAET (Food Assistance Employment & Training)	\$39,155.31	Ohio Works First	6%	44%	50%	TANF Summer Youth	\$137,649.85
TANF (Temporary Assistance for Needy Families)	\$1,176,467.01	OWF Work Allowance	6%	44%	50%	Supervised Visitations	\$26,136.89
TANF Admin	\$1,052,191.90					TANF Work Allowance	\$12,302.00
						Child, Family & Adult Community Protective Services	\$119,062.65
TOTAL	\$3,885,326.19	TOTAL	\$16,540,802.00			TOTAL	\$325,939.92

NON-EMERGENCY TRANSPORTATION COSTS (NET)

The agency provides transportation services to and from medical appointments for those receiving medical assistance.

From July 2014 to June 2015, our three drivers provided 500 trips which assisted 260 clients.

SEA and Horizons also provide transportation and assisted over 5,000 clients. They provided 31,452 trips in 2015 and logged 428,427 miles. Federal dollars paid those costs—totaling \$899,698.18.

